



JARE Airline Training Partnership

Mock-up Cabins & Check-in Areas 2025-26



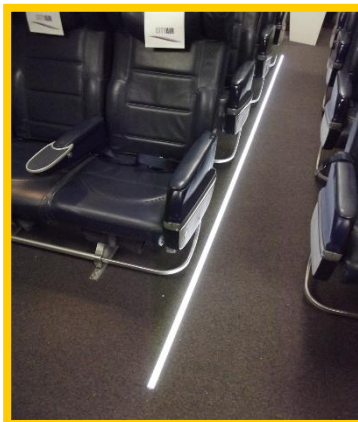
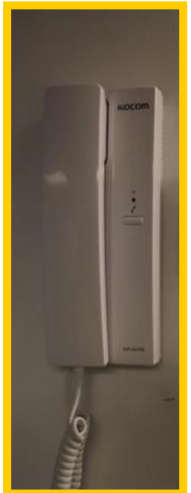
At J.A.R.E. Airline Training Partnership we have an unrivalled experience, over 35 years, of building mock-up cabins and check-in areas as well as providing airline, airport and aviation support equipment which has been successfully used in over 200 colleges, universities, schools & aviation training centres across the UK & Overseas.

ALSO WE UPGRADE, REFRESH AND MAINTAIN EXISTING MOCK-UP CABINS!

We offer a range of full mock-ups like the stunning example below (just a few others are featured later from our extensive range) as well a range of cut-away, midi and half mock-up cabins + **our UNIQUE Starter options** & check-in areas with alternatives to match a college's specific budget, space & other considerations. *If you have the will to consider a mock-up cabin we will find a way for it to become a reality sooner than you think!*



Our Mock-up Cabin prices range from £15,995 to over £139,995 + – we can always match something to your budget, adding on items later if



We can build you a range of Mock-up cabin options which are shown on the following pages – just ask us for your specific requirements.

These are just a few examples of the many options we can offer; we can also offer a range of electronics to recreate a range of emergency and service simulations to replicate active aircraft cabin environments i.e. active PSUs, interphones, touch screen control panel and many more options via our unique **Forward Attendant Panel** controlled PLC system.

Examples Cut-away + Full & Half Mock-up Cabins & Check-in Areas



Example of a **Cut-away 4 row** mock-up cabin within a classroom – one option includes a rear full width galley, FAP-HMI system, full electronics, PSUs & Exit/ACP indication + lighting etc., to create a full interactive package with pathway marking.



Examples of larger (interna,) **Full Fuselage** Mock-up Cabin across a narrower classroom to create a full mock-up feel without the need for an exterior fuselage



Half Mock-up cabin with two class seating – with flight deck and door images

Some recent References from a range of projects

April 2024

To whom it may concern :

We worked with JARE Airline Training Partnership Limited who designed, built, installed and commissioned an Aviation Suite for us at Langley College which was fully completed in 2023 when the Check-in side of the installation was commissioned.



Our Suite comprises the following:-

Cut-away Mock-up Cabin with open fuselage reveal - in a single seating cabin configuration of economy seating for 24 PAX places - it included an interactive GALLEY FIRE SIM + a comprehensive FAP/HMI electronic control system to enable the cabin to be fully functional
ii. Twin Check-in Desks, conveyor, electronic scales and check-in PA - including custom software to check passengers in and print out boarding passes, luggage receipts and Flight Manifests
iii. Departure Lounge - a seating area for 24 PAX places arranged in various rows
iv. Archway Metal Detector SIM - an AMD was supplied to allowed for passengers to be screened for prohibited items

At Langley College we have found this Aviation Suite an invaluable training tool and we have seen a huge growth in students enrolling on our aviation programmes and many students have successfully passed through the Aviation Suite and moved into aviation roles with airlines and at airports as cabin crew and ground staff.

JARE ATP Limited completed this work, on time, within budget, to a very high standard and provided a professional service to us at Langley College throughout including staff training and a back-up service.

We have been highly delighted with what JARE ATP provided for us and we would thoroughly recommend them as a trustworthy and supportive company to build a similar Aviation Suite within budget and within any time constraints for anyone else in a similar educational setting.

Kind regards,

M Bhandari
Monish Bhandari
Programme Manager - Travel, Tourism and Aviation



Hall Place
Burchetts Green
Maidenhead
Berkshire, SL6 6QR
01628 824444



Station Road
Langley
Berkshire, SL3 8BY
01753 793000



High Street
Egham
Surrey, TW20 9DR
01784 437506



St Leonards Road,
Windsor
Berkshire, SL4 3AZ
01753 793000

Part of the Windsor Forest Colleges Group | info@windsor-forest.ac.uk | www.windsor-forest.ac.uk



29th April 2024

Ref: Jare-ATP

HSDC has a long tradition of success within its Cabin Crew training courses and the creation of our new Aviation Suite was the next step for us in this area.

The team at JARE Airline Training Partnership worked with us to create an industry training space integrated classroom and the finished product really shows the commitment the College has to supporting the next generation of cabin crew for the industry.

JARE Airline Training Partnership Limited designed, built, installed, and commissioned an Aviation Suite mock-up. The Mock-up was an A320 Cut-away Mock-up Cabin with open fuselage type - in a single seating cabin configuration of economy seating for 24 PAX places - it included a front and rear GALLEY and a comprehensive FAP/HMI electronic control system to enable the cabin to be fully functional.

HSDC have found this Aviation Suite an invaluable training tool and this has attracted many students to the course with increasing student numbers year on year since it was completed two years ago. As a learning space, the aviation suite has been a real success building industry skills for the students and many students have successfully passed through the aviation training and moved into aviation roles with airlines and at airports as cabin crew and ground staff.

It has been a pleasure working collaboratively with JARE ATP Limited who completed this work, on time, within budget, to a very high standard and provided a professional service to the College throughout including staff training.

We would recommend JARE ATP to any other educational organisation who need assistance with the design and build of a Mock-up Aviation Suite.

Sean Edwards
Director of Facilities

Alton Campus, Old Odiham Rd, Alton, Hampshire. GU34 2LX
Havant Campus, New Rd, Havant, Hampshire. PO9 1QL
South Downs Campus, College Rd, Waterlooville, Hampshire. PO7 8AA
M: 07702 885176 T: 023 9326 9739 E: sean.edwards@hfdc.ac.uk



KINDNESS + RESPECT = INCLUSION & SUCCESS



ALTON
HAVANT
SOUTH DOWNS



25th April 2024

To whom it may concern

I am writing to provide a reference for J.A.R.E. Airline Training Partnership Limited, based on their exceptional performance in delivering an Aviation Training Centre project for University College Birmingham (UCB).

JARE Airline Training Partnership Limited completed the project in 2020, which involved the design, construction, installation, and commissioning of an Aviation Training Centre at UCB. The facility, comprising various essential components such as a Full Mock-up Cabin, Twin Check in Desks, a B737 Door Trainer SIM, Departure Lounge, Archway Metal Detector SIM, and a comprehensive Cabin Support Package, has been instrumental in providing invaluable training experiences to our students.

Throughout the project, JARE ATP Limited demonstrated a high level of professionalism, expertise and commitment. They completed the work on time, within budget, and to an exceptionally high standard. Their team provided comprehensive staff training and on going support, ensuring the success of the project and the satisfaction of our institution.

We are highly satisfied with the outcomes achieved through our collaboration with JARE ATP Limited and would confidently recommend them to any organisation seeking to establish a similar Aviation Suite. Their trustworthiness, reliability, and dedication make them an ideal partner for delivering outstanding results within budget and time constraints.

In my previous role as Deputy Vice-Chancellor (Corporate Services), I spent considerable time working with their team to ensure the right product for students. I found them very honest, very student (and staff) focused, very positive and supportive to work with and highly flexible. It was a joy to work with their full team. Their facility has proven very popular.

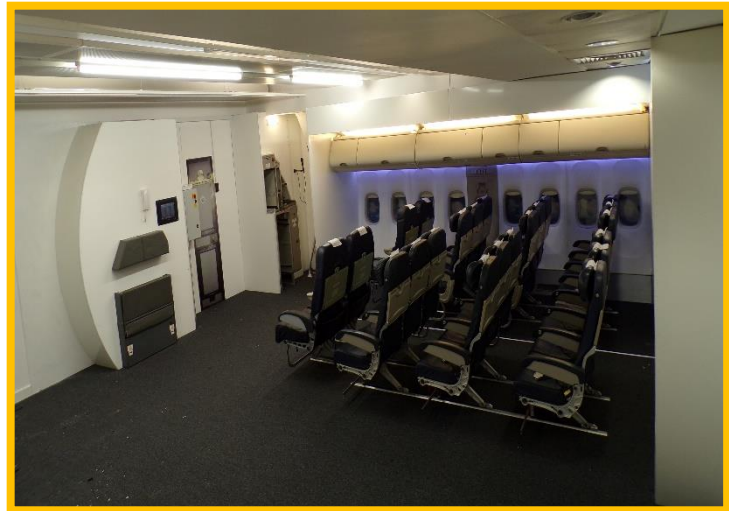
Should you require any further information or assistance regarding our experience with JARE ATP Limited, please do not hesitate to contact me.

Sincerely,

Michael Harkin
Vice-Chancellor and Principal
University College Birmingham

Professor Michael Harkin • Vice-Chancellor & Principal
University College Birmingham • Summer Row • Birmingham B3 1JB
Main Switchboard: 0121 604 1000 • www.ucb.ac.uk

Another range of Mock-up Cabin starter options



One college went from the image on the left to start with and then a few years later we installed this cut-away on the right hand side, utilising the original seating



Starter options with seating, small galley, jumpseat & interactive PA/Interphone; starter electronics can also be installed



Refurbishment & upgrade – this mock-up on the left was very worn, damaged and was totally lacking in any interactive features AND in a very sorry state of disrepair, in fact unusable – but look at it now on the right!

Modern seating, interactive electronic features, PA/Interphone & up-to-date lighting + pathway marking

Air Cabin Crew SIMULATORS
For SEP type training we have a range of realistic SIMS



Galley Oven FIRE SIM

Door Trainer SIM

NOTE: FIRE SIMS use RC BCFs (weighted to 1.5kg), smoke, lighting and realistic sound effects simulating a cabin fire – they are popular for Cabin Crew training and very realistic



Smoke-filled Cabin/Decompression SIM ~ LAV/Toilet FIRE SIM

NOTE: These FIRE SIMS can be used for Locker and other Cabin Fire SIM options where required

We can also RETROFIT many of our SIMS to existing Mock-up Cabins and within Aviation Training Centres.

Check-in Area examples



Examples of both single desk and double desk check-in options



An example of a double check-in area and two types of Security Arch
We also now offer Self-Check-in Kiosks which many airports now use

These are just some of the 149 Mock-up cabin & Check-in Area examples we have built over the last 35 years. All our work is quality assured via our longstanding ISO 9001:2015 accreditation.

We can also install in all our mock-ups an interactive touch-screen PLC system which can also be remotely controlled by a Tutor via a wi-fi enabled tablet device, PC or Laptop etc., to activate and/or simulate a whole range of cabin scenarios for interactive student teaching which is very flexible. The system represents the latest aircraft technology to be found on aircraft such as the Boeing B787 Dreamliner for example. This is a recommended option.

A range of tasks can be achieved on the multi-page Touch-screen FAP system including:-

Controlling the sound system

Controlling the Passenger Service Units inc: Call Bells, No Smoking, Fasten Seat Belts and Reading lights + alerts and re-setting

Controlling the lighting (if any) including the ability to dim LED lights

Controlling a range of sound effects including in-flight, emergency scenarios, call bells

Controlling the Interphone handsets and PA via the handsets

Controlling any pathway marking or emergency exits signs

Additionally a range of extra bespoke options can also be built into our Touch-screen electronic systems

For more information, ideas and help with your own specific mock-up cabin and/or check-in area, starter mock-up, refurbishment or upgrade of a mock-up requirement, please contact:

Andrew N.S. Easton: ☎ 01202 582354 e-mail: anse@jare-atp.co.uk

J.A.R.E. Airline Training Partnership Limited,

307NE Commercial Road, Bournemouth Airport, Hurn, **Christchurch**, Dorset, BH23 6NW.

☎ 01202 582354 ~ E-mail: mail@jare-atp.co.uk ~ www.jare-atp.co.uk

Mock-up Cabins ~ Check-in Areas ~ Aviation Equipment ~ CEET/CST/Door Trainers/Fire Trainers ~ Design ~ Build ~ Installation ~ Maintenance - since 1990
Directors: Julie A.Rushton & Andrew N.S.Easton ~ Company Reg. No: 05288385 in England & Wales ~ VAT GB 817 4846 05 ~ LRQA ISO 9001:2015

© JARE ATP Limited



10/25